

Collaborative Adaptive Rangeland Management



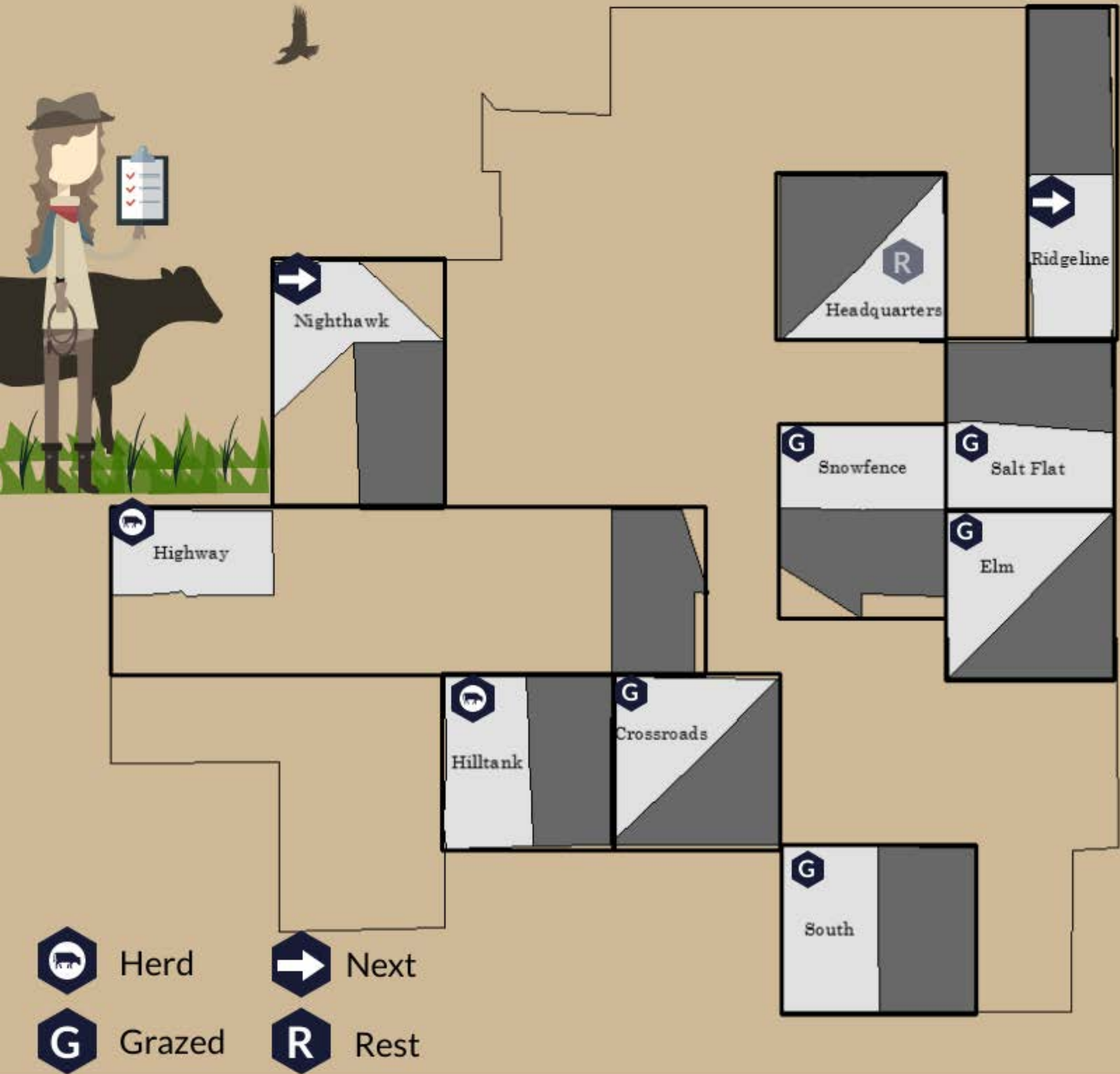
Where it all began





Dive into the details...

CARM moved!



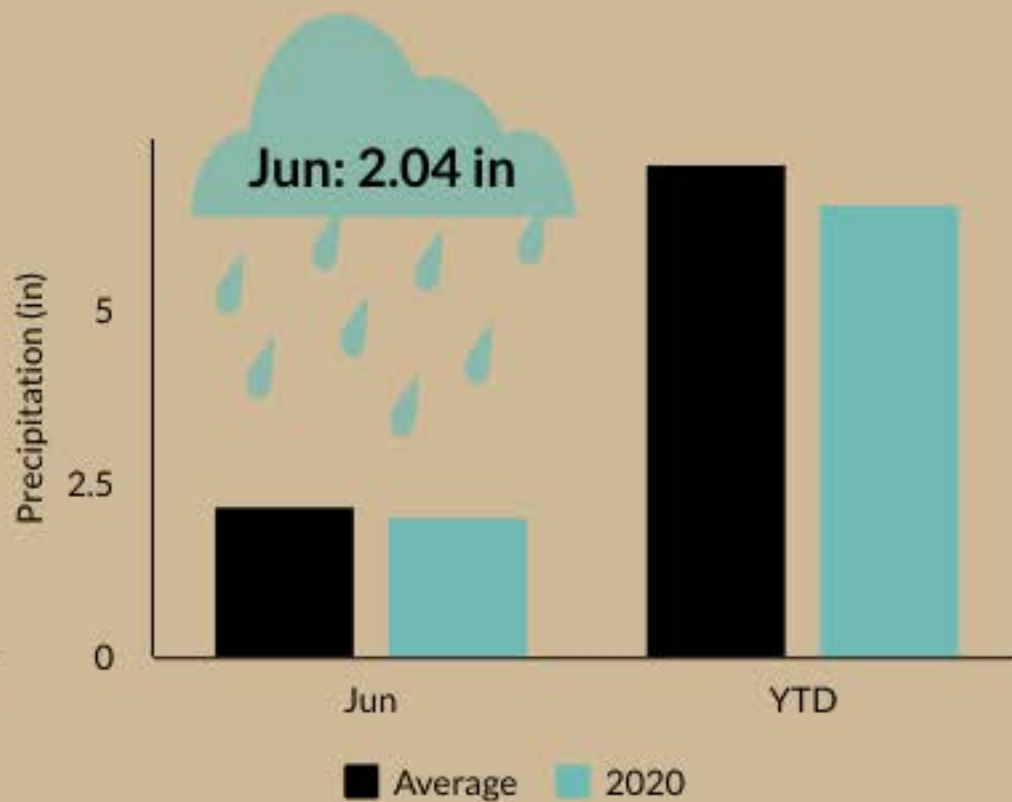
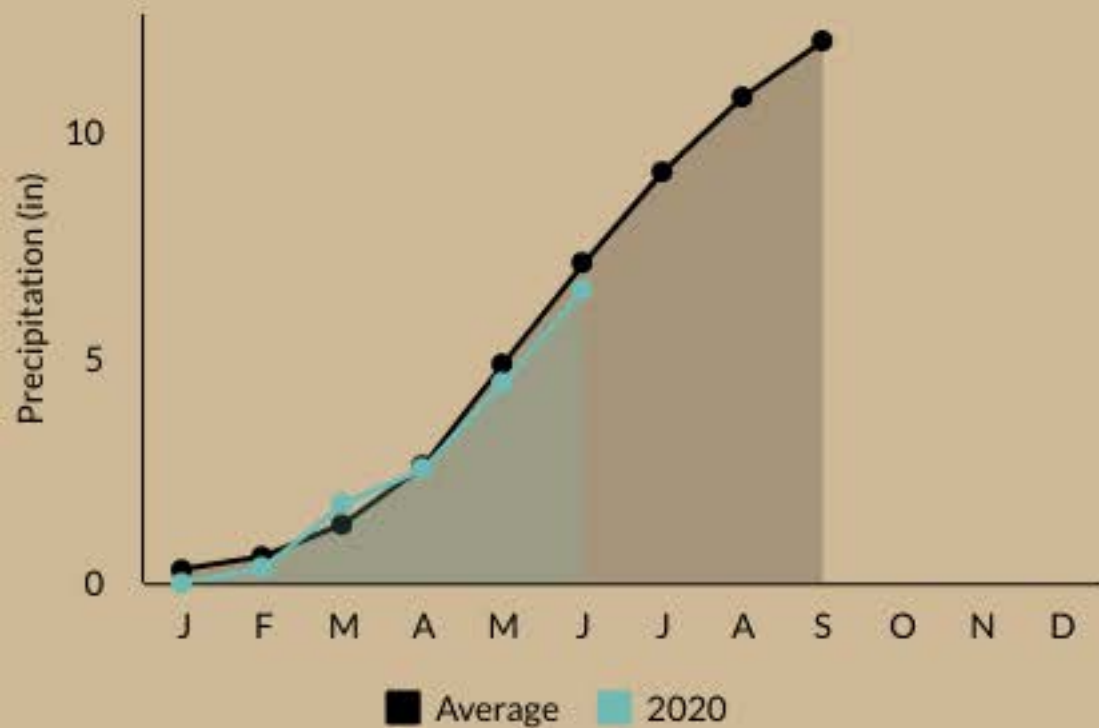
Highway | Hilltank

- Loamy Soils
- Warm Season Grasses
- Vegetation Threshold:
 - 300 pounds/acre

- Loamy Soils
- Warm Season Grasses
- Vegetation Threshold:
 - 300 pounds/acre

Highlights of Happenings

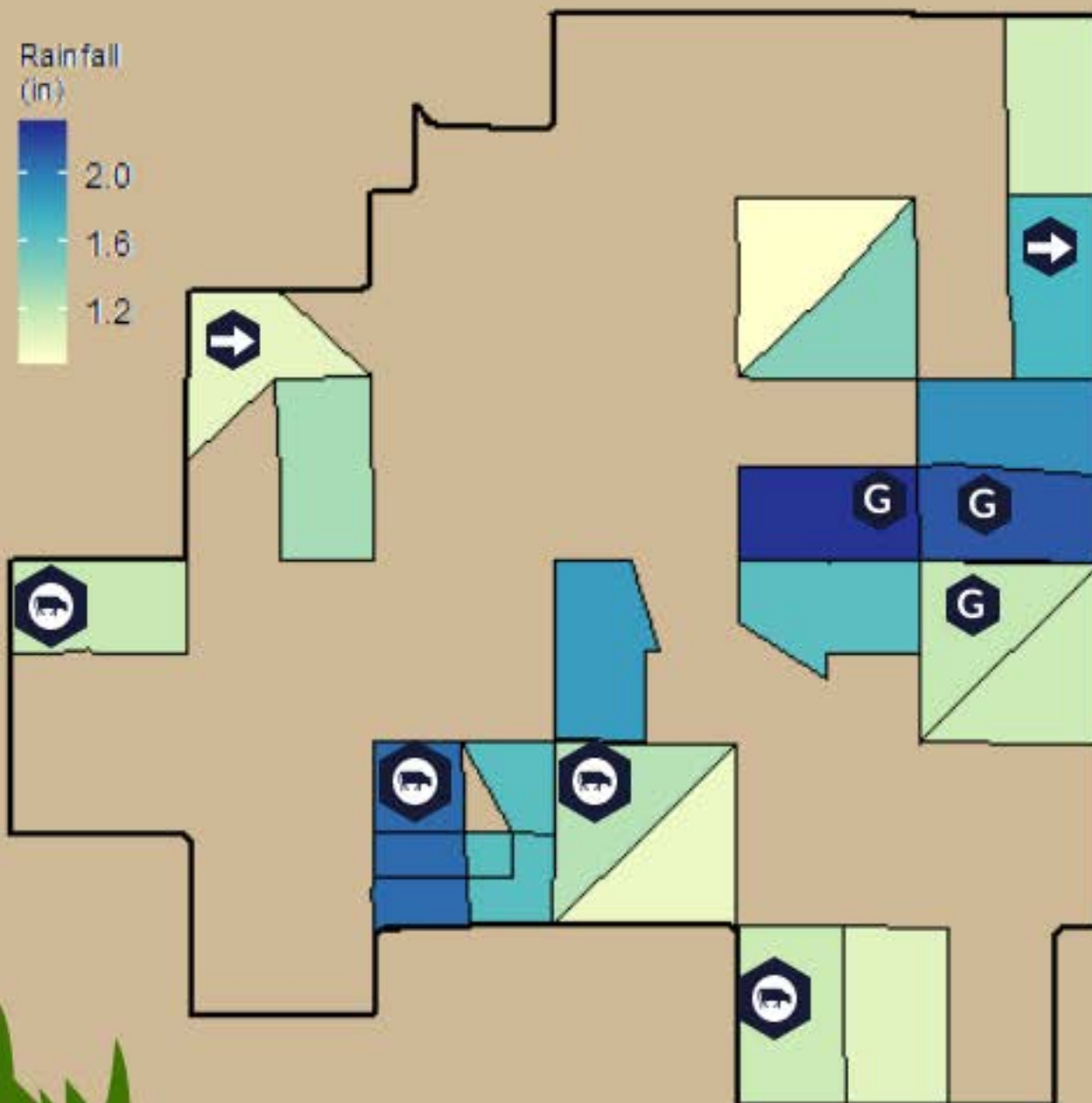
Rainfall Totals



Total Rainfall

2020-06-21 to 2020-06-28

Rainfall Distribution



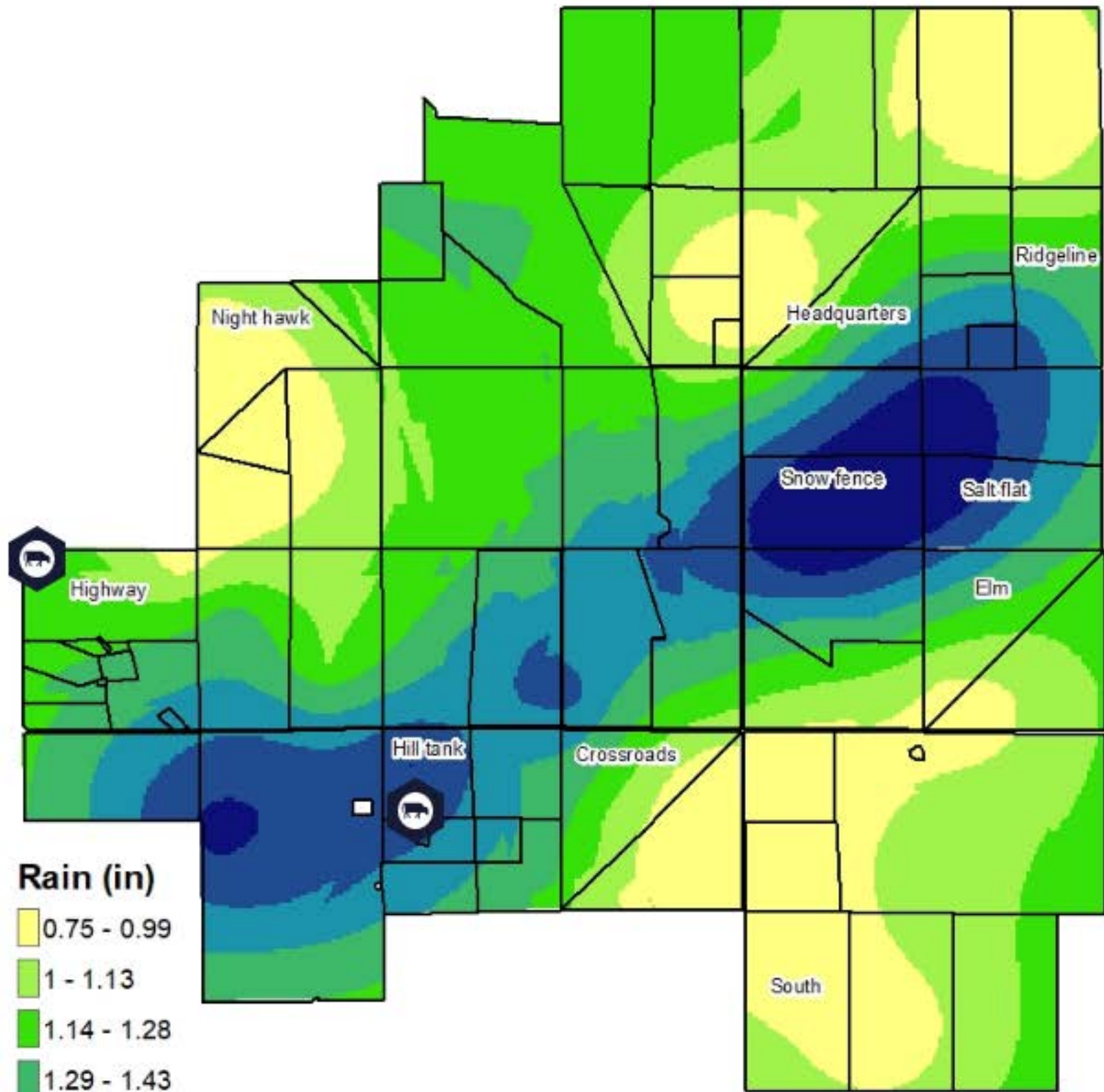
Drought Monitor

Grass-Cast



CPER Deluge - June 26, 2020

Received all this rain in about 3 hours!



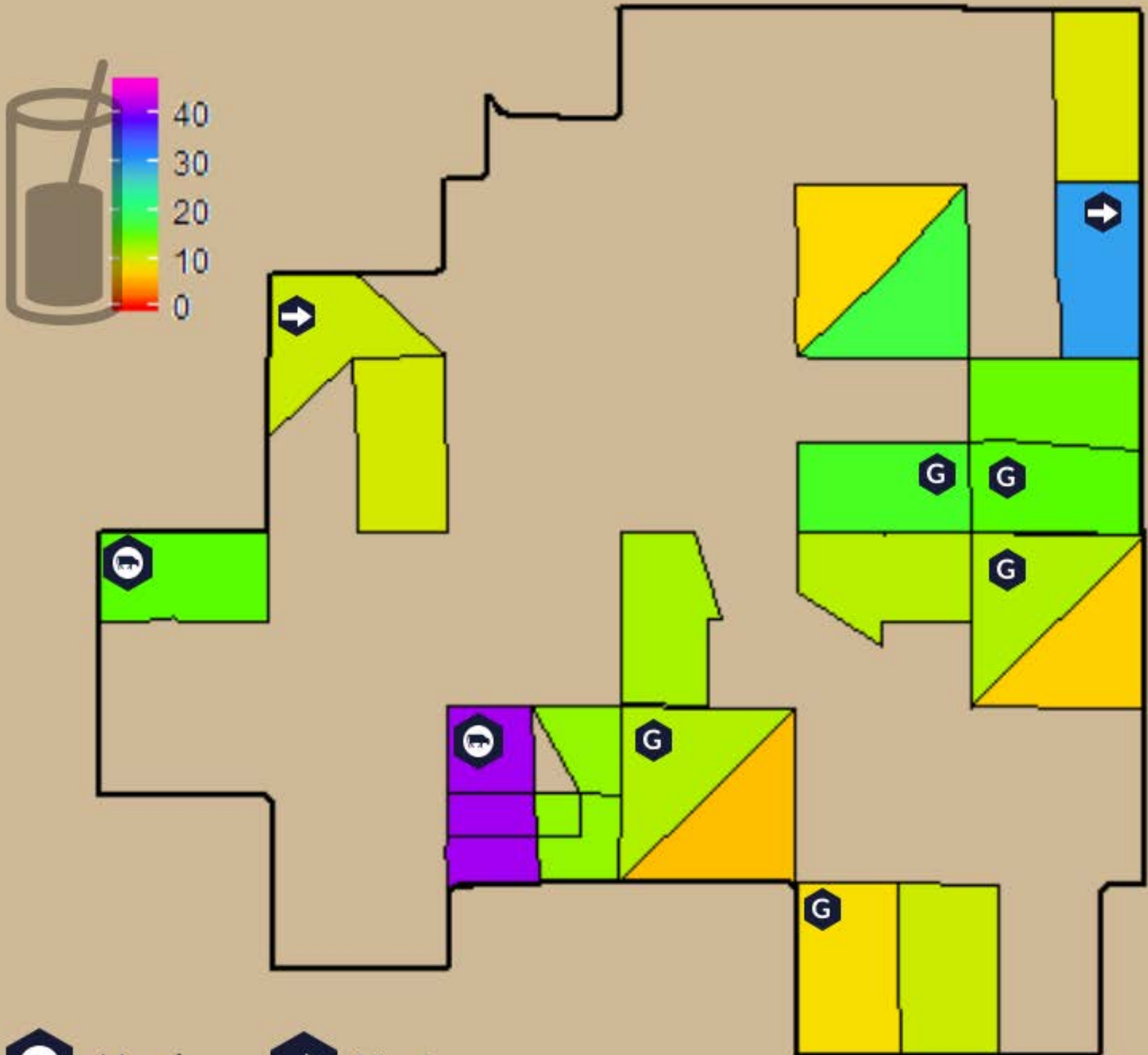
Soil Moisture Distribution

What's in our cup?

That deluge topped the cup off real nice.

Current Soil Moisture

2020-06-28

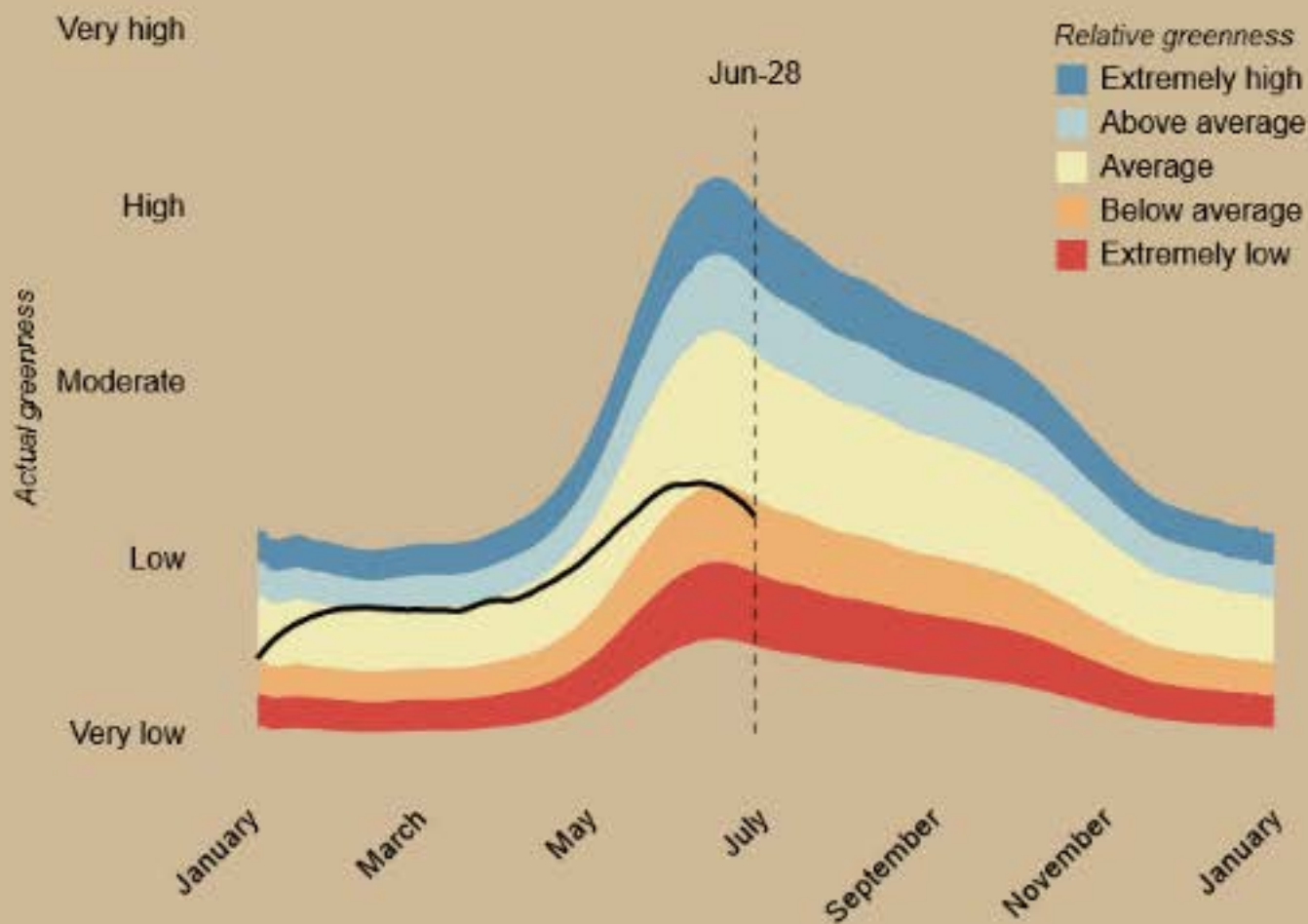
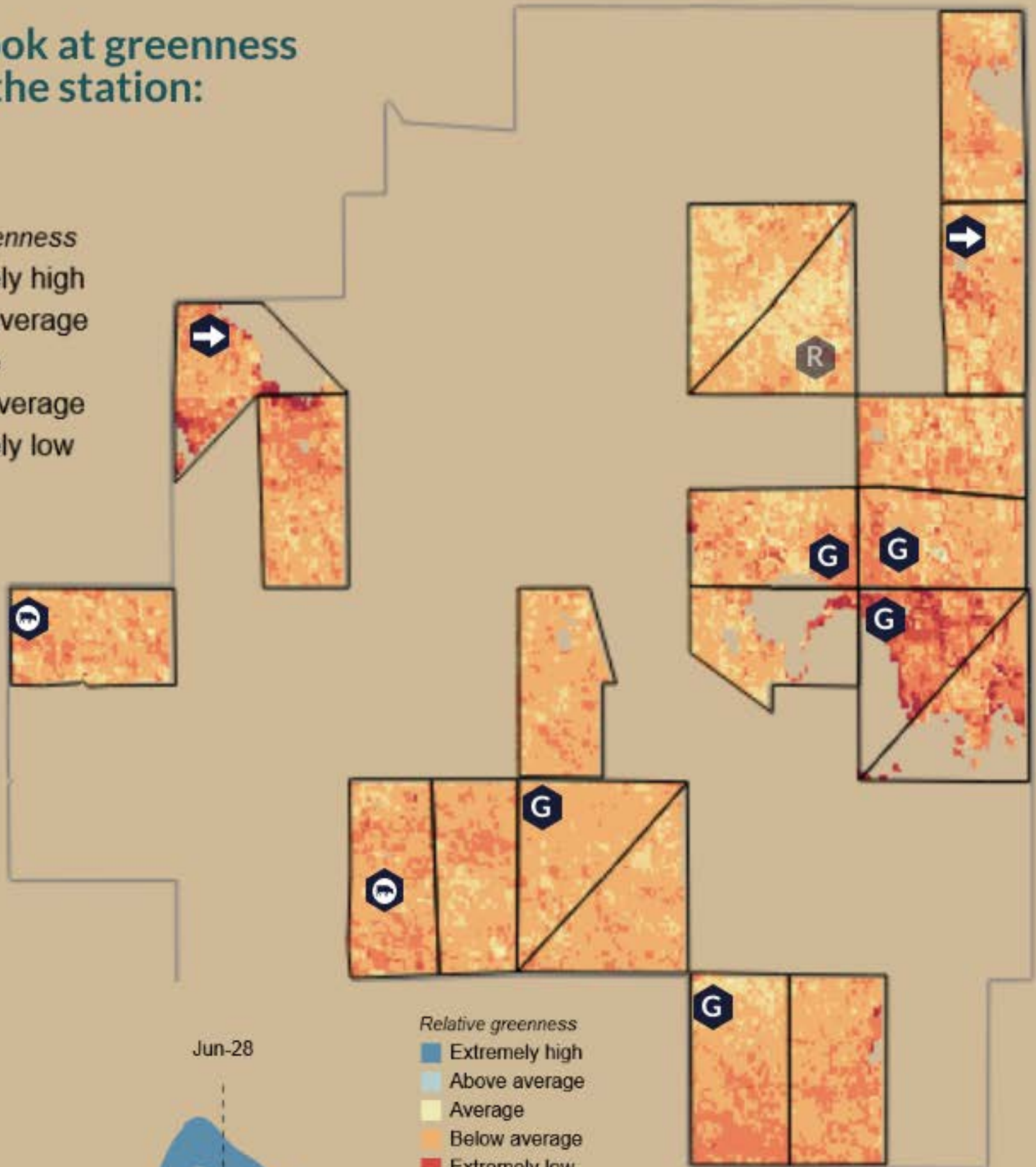


- Herd
- Next
- Grazed
- Rest

A detailed look at greenness across the station:



- Relative greenness*
- Extremely high
 - Above average
 - Average
 - Below average
 - Extremely low



- Relative greenness*
- Extremely high
 - Above average
 - Average
 - Below average
 - Extremely low

- Herd
- Next
- Grazed
- Rest

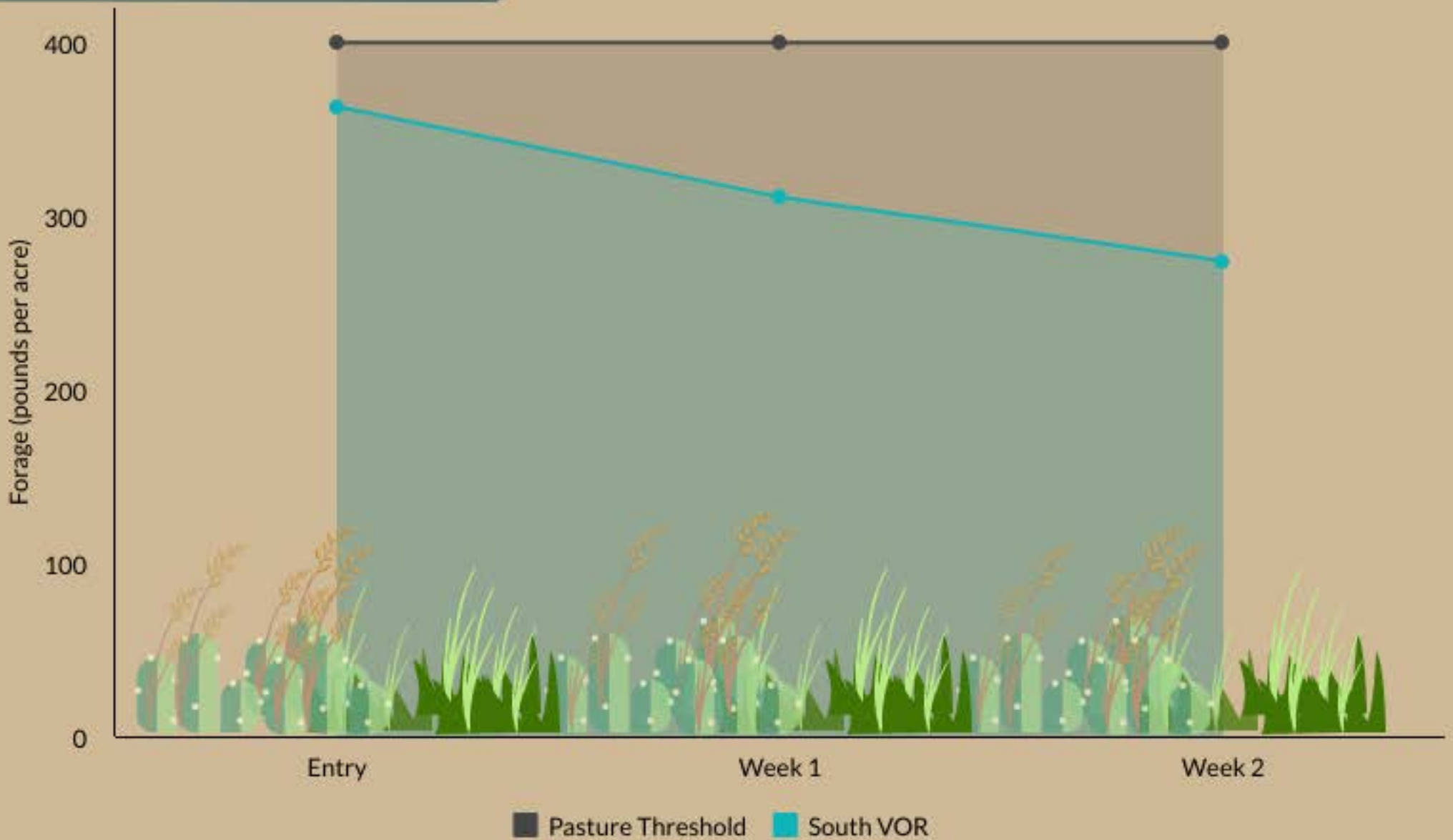
This is pre-deluge data. We'll have a greenness update soon!

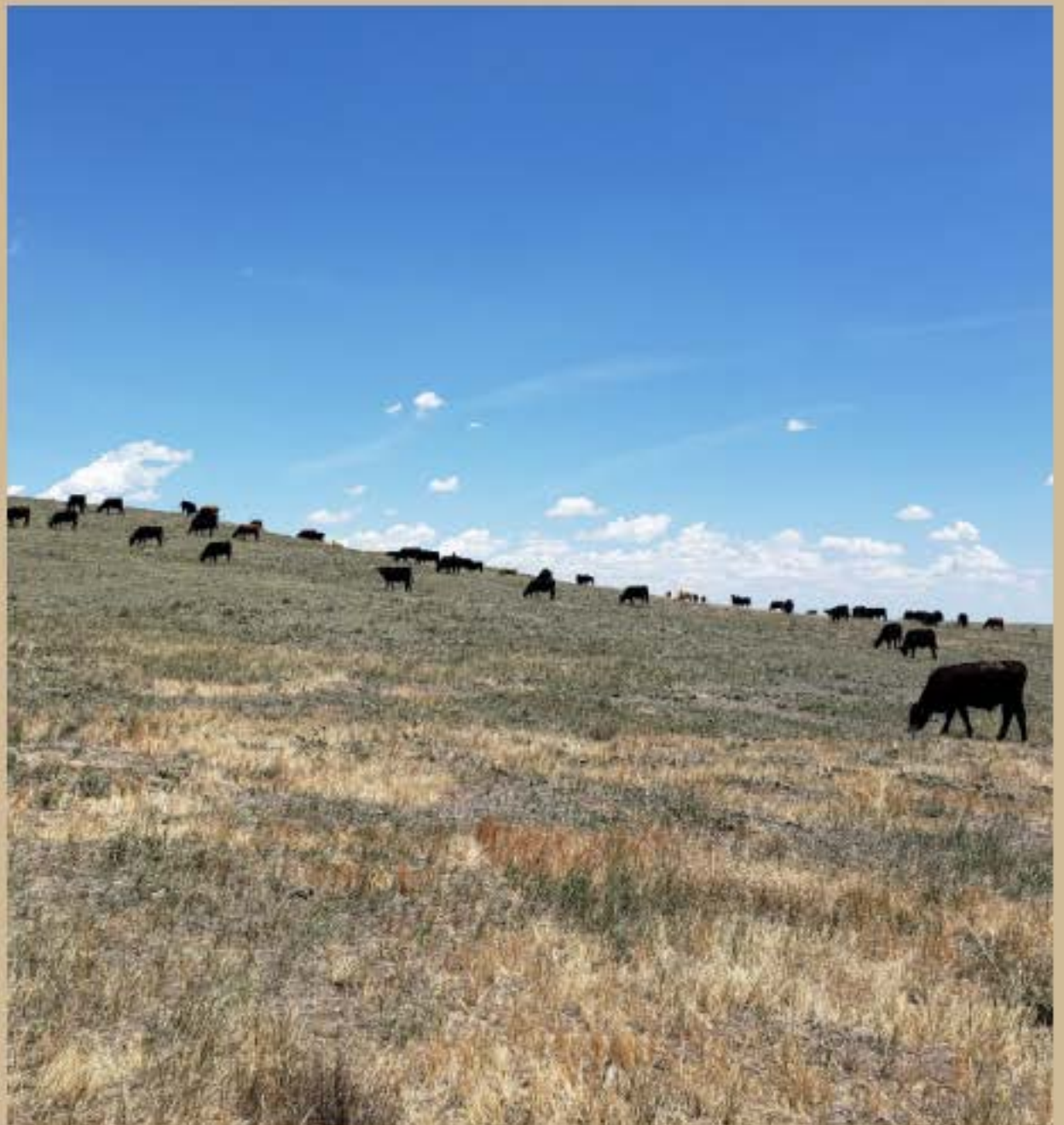
South



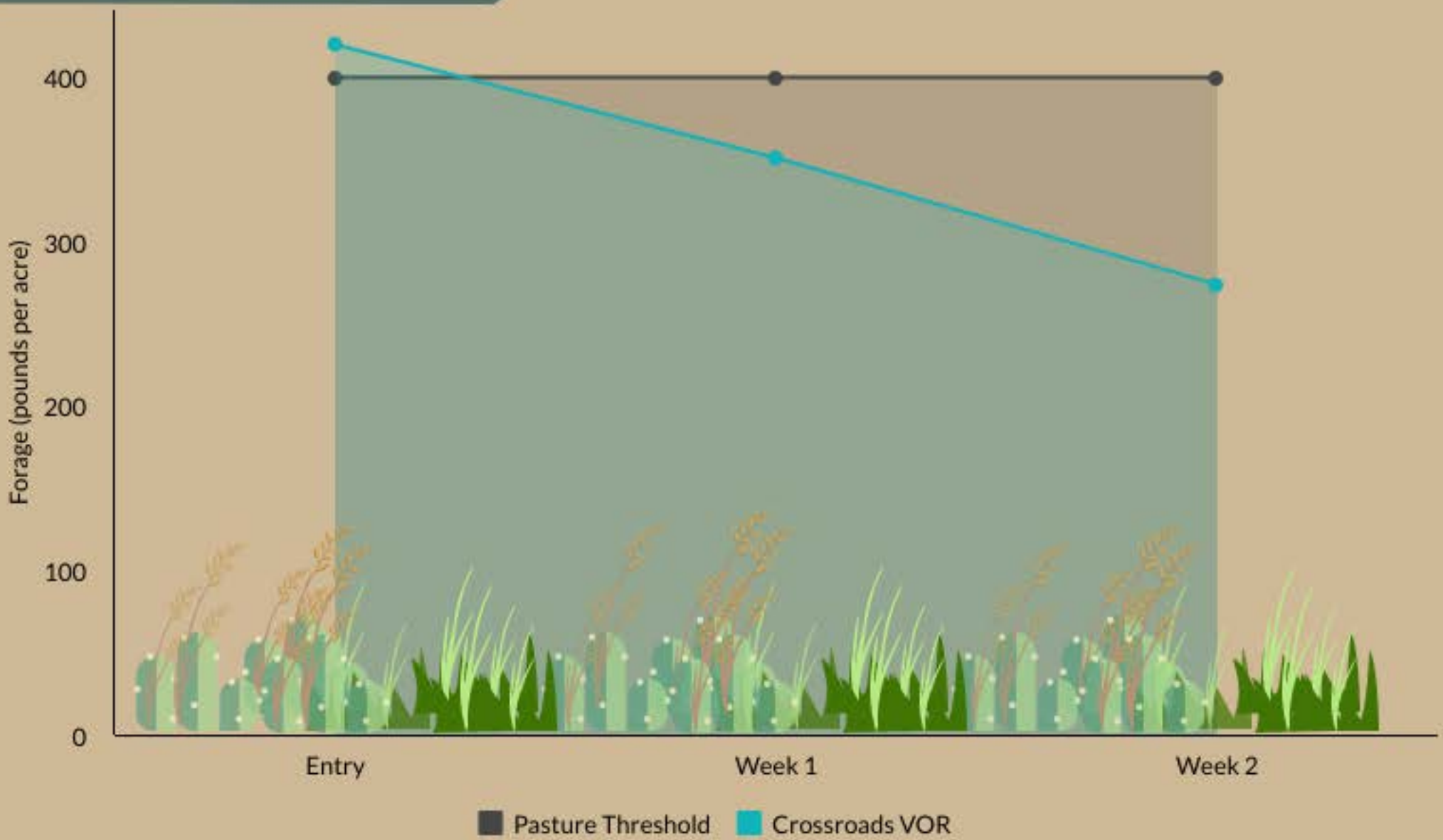
274 lbs/acre
1.1 cm

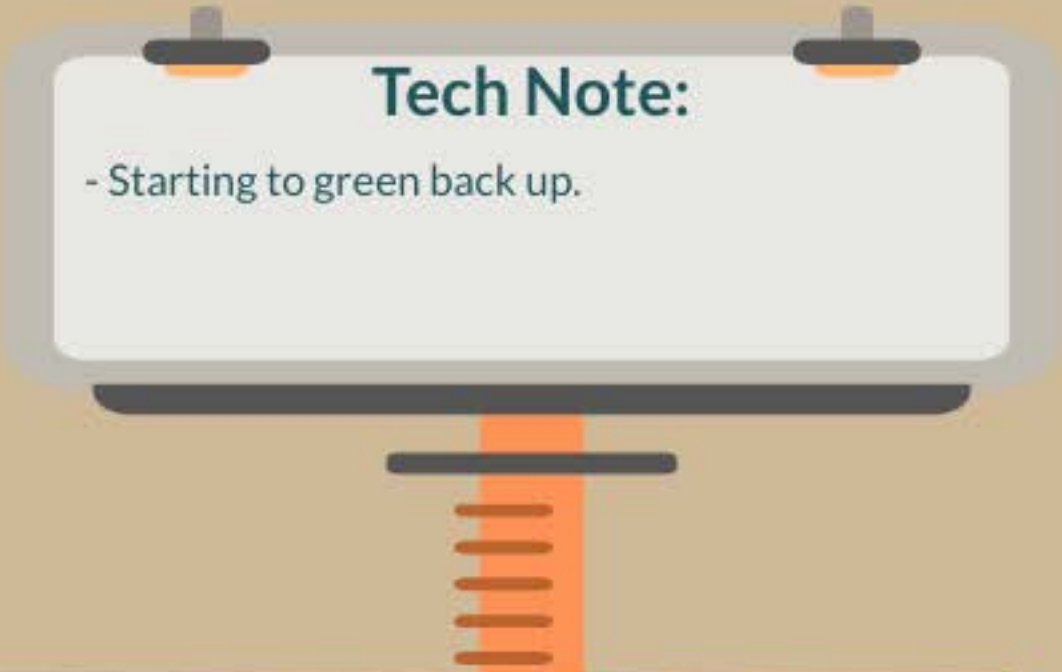
Latest on the ground...





Latest on the ground...

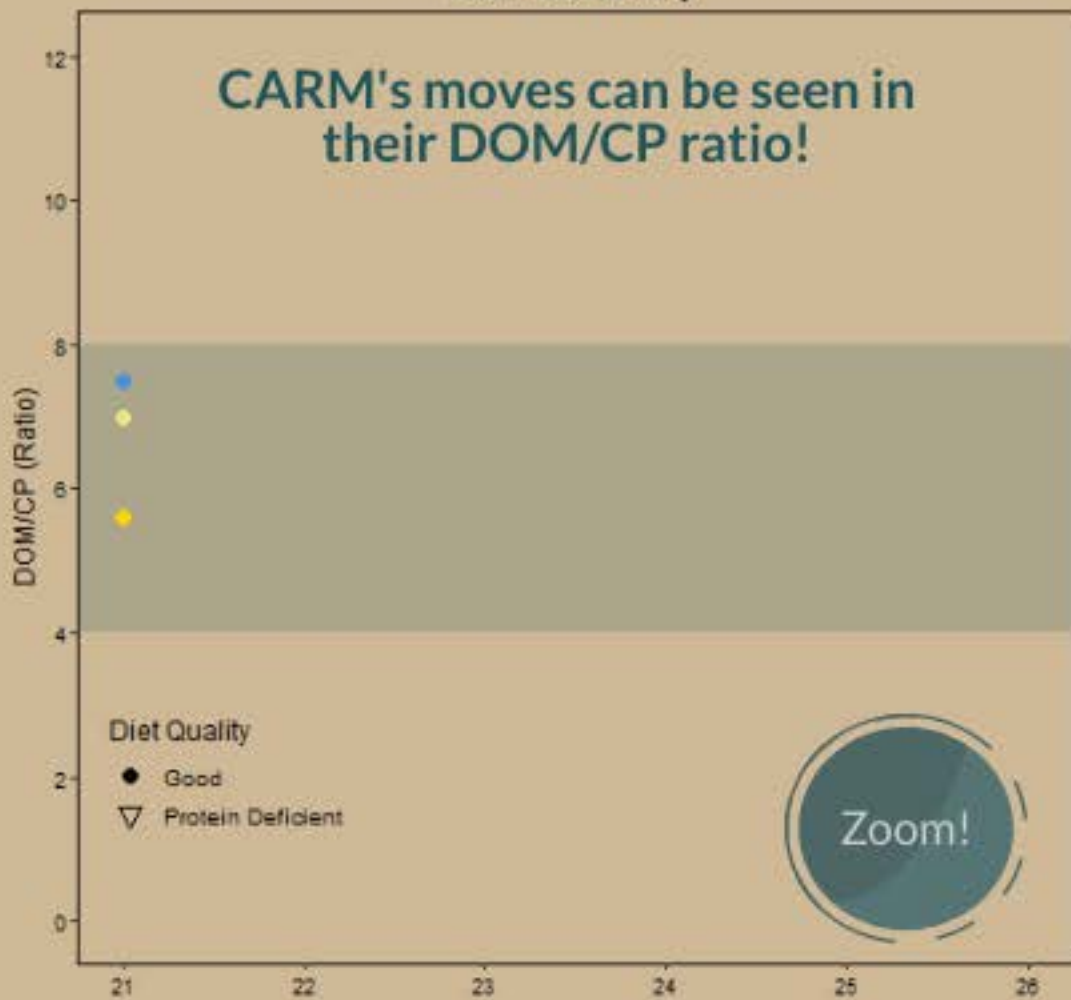




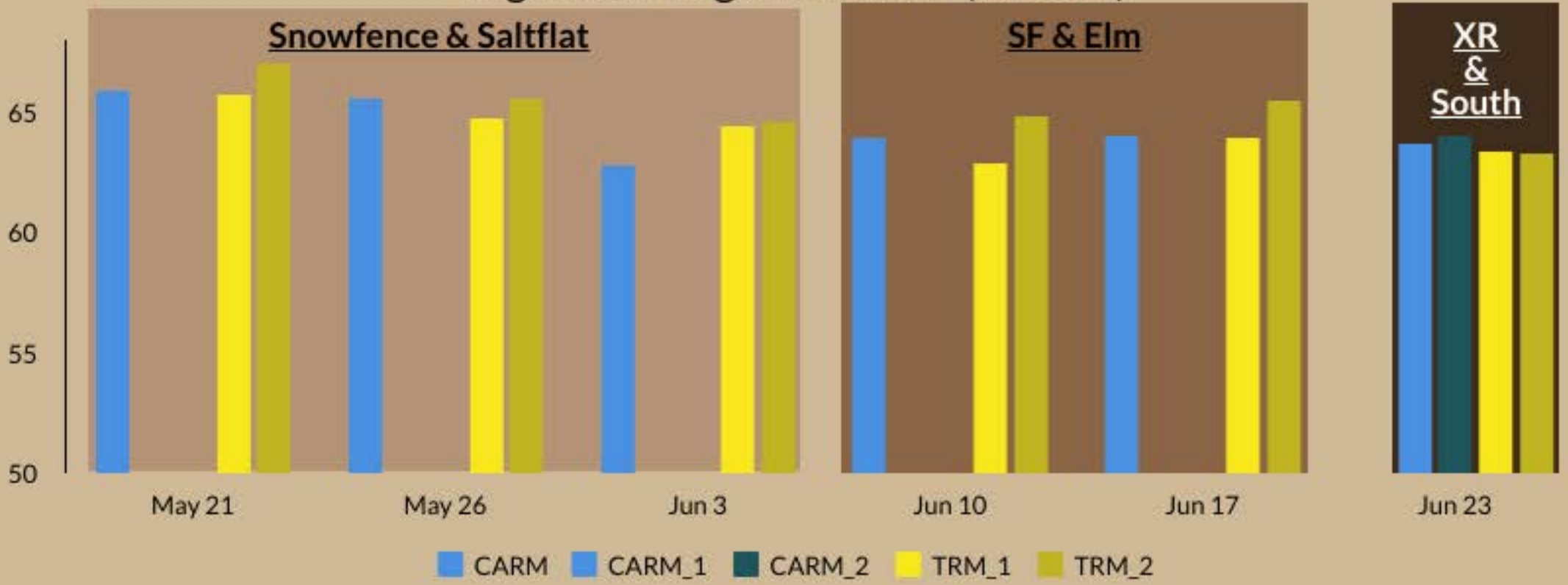




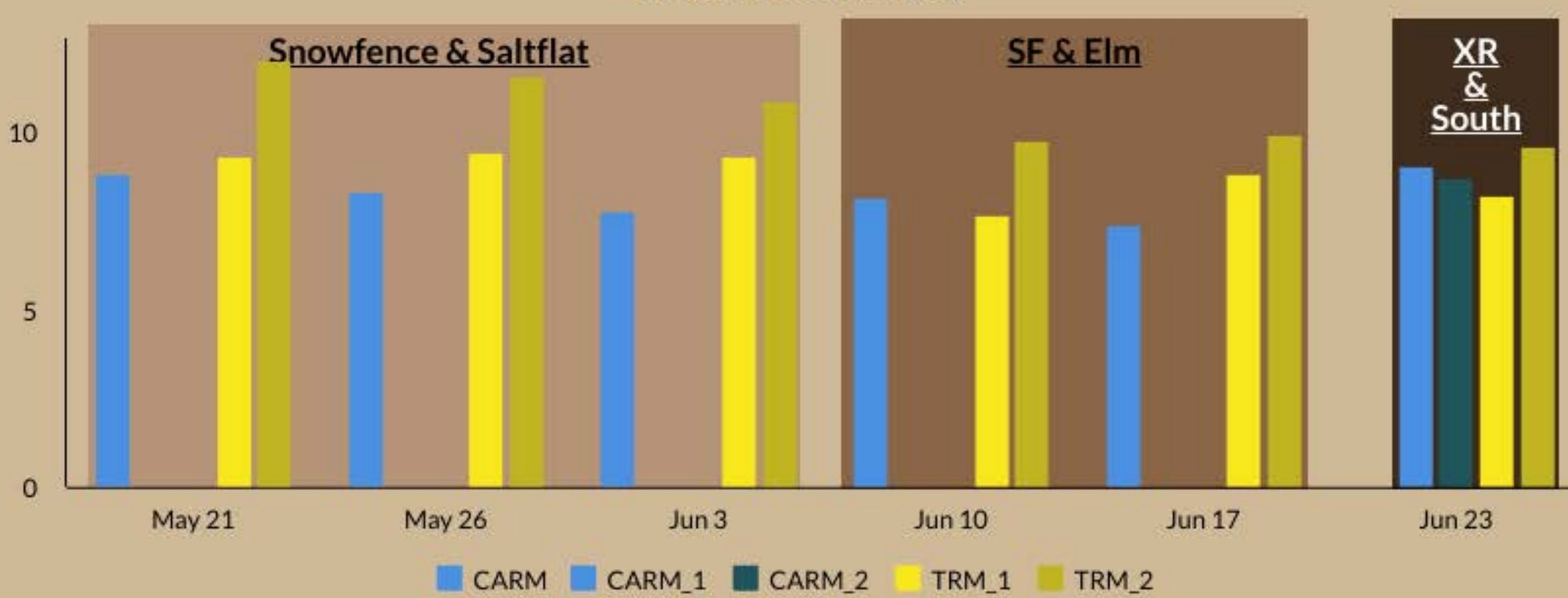
CARM's moves can be seen in their DOM/CP ratio!



Digestible Organic Matter (%DOM)



Crude Protein (%)





Decision Recap

Stakeholders voted on some big changes this April!

Rotation 4:

Start Date: August 10

Max Days: 42

VOR trigger: same

CARM1 in Highway and CARM2 in Hilltank

This should not negatively impact Fourwing saltbush.

It should help reach shortgrass goals in Hilltank.

Pasture	What we wanted to happen	What actually happened			
	Notes from April	Date In	Date Out	Trigger Used	Notes
1) Snowfence & Saltflat	Gates open between, Shoot for 21-24 days, measure VOR separate & use average to gauge veg trigger, cattle gains, 5/15 - 6/8	15-May	4-Jun	Max Days	
2) Saltflat & Elm	Gates open between, Shoot for 21-24 days, measure VOR separate & use average to gauge veg trigger, cattle gains, 6/8 - 6/29	4-Jun	18-Jun	VOR Threshold	Left almost two weeks earlier than planned.
3.1) Crossroads	Reduce VO for MCLO (< 5cm) 6/29-8/10	18-Jun	1-Jul	VOR Threshold	
3.2) South	Reduce VO for MCLO (< 5cm) 6/29-8/10	18-Jun	1-Jul	VOR Threshold	
4.1) Highway	Reduce VO for MCLO (< 5cm) 8/10 - 9/21	1-Jul			
4.2) Hilltank	MCLO 8/10 - 9/21	1-Jul			
5.1) Nighthawk	9/21 - end of easeon				
5.2) Ridgeline	9/21 - end of easeon				
6) Headquarters	Rest				



Up & Coming

- Virtual Pasture Tour - Date TBD (cast your vote in the doodle poll)
- CARM Data Day - Same day as the Virtual Tour!

On behalf of the USDA-ARS
Rangeland Resources & Systems Research Unit,
I thank you all
for your continued participation
in this project.

Happy Trails!



For detailed precipitation
data, maps, last year's
updates, Scientist bios, and
CARM documents, see our
website:



ALL access data!